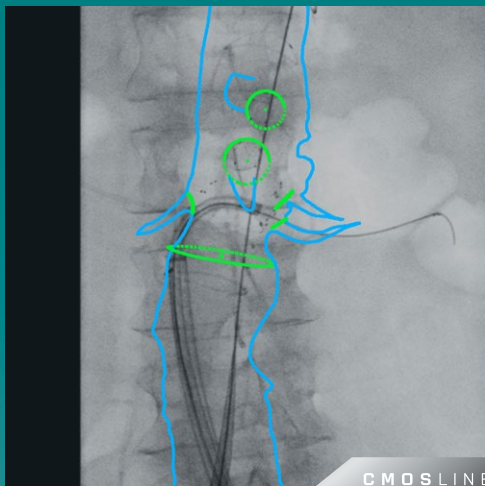
 Algorithm based on artificial intelligence

# THE FIRST ENDOASCULAR NAVIGATION INTEGRATED INTO A MOBILE C-ARM



- **A dedicated workflow** on a single user interface
- **Easy and fast fusion imaging** thanks to artificial intelligence-based algorithms
- **Plan, perform and review your procedures** with greater confidence
- **Helps to reduce contrast media and X-ray dose** due to an improved workflow



Learn more:  
[www.ziehm.com/en/ENAV/mediel](http://www.ziehm.com/en/ENAV/mediel)

CMOSline represents a system configuration that is based on a Ziehm Imaging CMOS flat-panel detector.

Endovascular Navigation represents an optional medical device software package owned by Therenva SAS. Planning is performed with the software EndoSize, also owned by Therenva SAS. The EndoSize license is included in the Endovascular Navigation software package. Therenva SAS is a subsidiary of Ziehm Imaging GmbH.

For more information please visit: [www.ziehm.com](http://www.ziehm.com)

**Meet us at CX 2025, Booth #140**  
and be part of our **workshops**

April 23, **10:00 -11:00**, room #4  
April 23, **11:30 -12:30**, room #4

