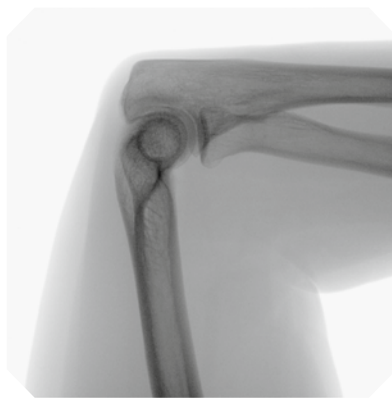


EXTREMITY IMAGING ANYWHERE

ORTHOSCAN
VERSA



Versatile. Portable. Flexible. Designed for unparalleled mobility, Orthoscan Versa is a fully portable imaging solution that seamlessly integrates into any clinical setting – whether on a desktop or an articulating monitor cart. The intuitive touchscreen monitor delivers a tablet-like experience, eliminating the need for bulky components and streamlining the clinical workspace. With effortless portability, Versa enables smooth transitions between satellite clinics and off-site locations, optimizing efficiency and patient care.



Effortless movement meets optimal viewing

Versa features an integrated touchscreen, compact design, and 180° rotation that allows for improved mobility, workflow, and imaging efficiency. These features are dedicated for improved patient outcomes and better diagnostics.

Pulsed/continuous generator

- Low dose X-ray generator
- 30, 15, 7.5, 2pps
- Intelligent dose reduction
- Optimized dose filter



VERSATILE SETUP

on a desktop or mounted on an articulating monitor cart

Intuitive touchscreen monitor

- 24" touchscreen LCD monitor with a resolution of 1,920px x 1,080px
- Integrated virtual keyboard for high clinical standards
- Reliable wired connection for easy and secure image transfer

Next generation flat-panel technology

- 15cm x 15cm field of view
- 100µm pixel size for high-resolution image quality especially important for sharp bone edges and clear differentiability

Flat-panel	15cm x 15cm
Image resolution	1.5k x 1.5k
Pulsed fluoroscopy	✓
High-resolution LCD monitor	24"
Additional CU filtration	✓
Weight	15.9kg
Orbital movement	180°